

# A Gift for the Future

Remembering the South London Botanical Institute  
in your will

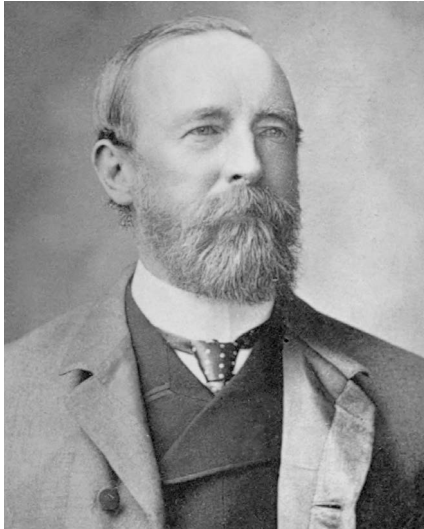


Discovering plants  
Enriching lives  
Sustaining the future





# A place of learning built on generosity



The South London Botanical Institute (SLBI) has supported generations of people to study and appreciate the world of plants. This opportunity is rooted in the legacy of social reformer, ornithologist and keen botanist, Allan Octavian Hume, who founded the Institute in 1910.

Hume formed the Institute at the age of 80 and gave generously, both during his lifetime and after his death, to help create and sustain the place we have today. This extraordinary legacy, of the house and its collections, is now known as the Hume Endowment Fund. The SLBI manages and uses these resources for botanical education in line with the terms of the endowment.

The spirit of generosity has continued to this day thanks to supporters who have given donations or left a gift to the SLBI in their will. Many of our donors have been touched by the work of the Institute at some point in their lives, whether as visitors, members, students, tutors, volunteers, trustees or friends.

Donations, large and small, have enabled the preservation of the charity's collections, the conservation of the building, and the development of our education programme for local schools. They have ensured the survival of the Institute through the ups-and-downs of the past hundred years.

Most importantly, gifts of this type continue to maintain and fulfil Hume's original vision - a vision that we all share - to make the study of plants available to everyone.

**“London is a great place to botanise and South Londoners are lucky to have the SLBI on hand to encourage and inform their love of wild plants. I believe Hume would be proud to know that his vision is being so actively pursued.”**

John Hughes, supporter





# Why leave a gift in your will?

Legacy gifts are one of the most meaningful ways to make a difference beyond our lifetime and have an impact for many years after they are received. They allow us to acknowledge the people, places or things that have influenced our lives while enabling us to create new opportunities for others. **If the South London Botanical Institute has been meaningful in your life, please consider leaving us a gift in your will and help future generations discover the magic and importance of plants. With your support we can safeguard and enhance our historic herbarium, library and garden, and protect the Institute as a special place of learning for at least another century.**



*"Plants are essential to our world and life on earth as we know it couldn't survive without them. If we want our children and young people to be the guardians of plant life in the future, they need to understand why plants matter, how they play a part in nearly every aspect of their lives and what*

*can be done to protect them. At the South London Botanical Institute we work hard to inspire and encourage people to be passionate about plants, the environment, and the role they can play in making a difference. We are uniquely placed to do this, offering an unusual botanic garden, educational facilities with microscopes, an interactive herbarium, a library, and a team of skilled educators. Situated in an area with limited outdoor green space, our services to schools and communities are all the more crucial. A gift left to the SLBI will have a lasting effect on future generations of school children, families and communities by helping us to provide quality learning opportunities for everyone."*

**Sarah Webley, Education & Outreach Coordinator, SLBI**



## "I really liked looking at the microscopes to see all the things ... it was really fascinating and I really want to do it again because it was so exciting!"

**Pupil, Kelvin Grove Primary School, Sydenham**



*"Having been involved in the SLBI for over 20 years I have seen again and again how we stimulate people to develop a passion for plants and benefit from what we have to offer. Our mission of 'Discovering Plants, Enriching Lives, Sustaining the Future' has never been more important. In coming years we will reach out to even more people from all backgrounds, as we develop the Institute as a leading educational resource for both our local, and the wider scientific, communities. We can only achieve this with the ongoing support of our members and friends. If you can, I hope that you consider leaving a gift in your will so that we can continue to thrive in the years ahead. Thank you."*



**Roy Vickery, President, SLBI**

# How to leave a gift

Arranging or updating a will is not as complicated as you may think. We recommend using a qualified solicitor to ensure your will is valid and reflects your intentions. While we cannot provide legal advice, you are welcome to contact us any time to discuss your wishes in confidence.

There are several types of legacies including specific cash gifts, a proportion of your estate, a specific item or asset, or the residue of your estate after your loved ones are taken care of.

- **A pecuniary gift** specifies an exact sum of money (e.g. £1,000).
- **A residual gift** is what is left of your estate after all of the bequests, taxes and debts have been paid. You can leave the entire residual amount or a share of it (e.g. 10 %)
- **A specific gift** relates to a particular item such as stocks, shares or property, eg. a piece of art or a collection.

A residual gift is generally of the greatest benefit to the South London Botanical Institute as its value increases in line with inflation. The charity benefits most from gifts left with no restriction. This means we can direct funds to where they will have the most impact. However, if you have specific wishes we can discuss them with you to ensure your legacy remains relevant and can be put to the best possible use.

To learn more about how the SLBI manages its funds, you can download copies of our annual reports and independently examined accounts from the 'About us' page of our website; or please contact us to receive printed copies through the post.

If you don't already have a will, you can find a qualified solicitor in your area by using the Law Society website: [www.lawsociety.org.uk](http://www.lawsociety.org.uk) or call 020 7242 1222. There is some excellent guidance on making or updating a will on the Remember a Charity website: [www.rememberacharity.org.uk](http://www.rememberacharity.org.uk)

**If you choose to remember the Institute in your will, your solicitor will need the following information:**

Registered charity name:

**The South London Botanical Institute**

Registered office: **323 Norwood Road,  
London, SE24 9AQ**

Registered charity number: **214251**



For more information about making a gift, or to discuss your intentions with us in confidence, please get in touch on 020 8674 5787 (Mon-Thu) or email Nell Gatehouse, Administrator at [info@slbi.org.uk](mailto:info@slbi.org.uk)

**Did you know....you can leave as little as 1% of your estate to the SLBI so your friends and loved ones receive the other 99%? As a small charity that relies on charitable grants and donations, every gift – no matter how big or small – will make an enormous difference to our future.**

